




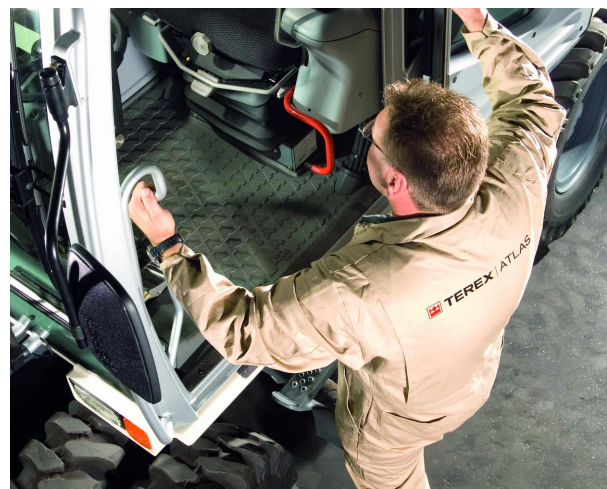
Mobile excavator 1305 M

STABLE. STRONG. STEADY.

1305 M



-  **13,8 - 15,7 t**
-  **67 kW (91 PS)**
-  **0,7 - 1,0 m³**



TECHNICAL INFORMATION

ENGINE

Power according to ISO 9249.....67 kW (91 HP)	Cylinder capacity.....4038 cm ³	Air filterDry air filter
RPM.....2000/min	Number of cylinders.....4	Battery.....2x 12V 2x100 Ah
Make/modelDeutz BF4M2012	Borehole/lift101/126	Alternator4 V/55 Ah
DesignTurbocharger	Cooling systemWater-cooled	Starter24 V/4 kW

HYDRAULICS SYSTEM

<ul style="list-style-type: none"> • AWE 5 system (load sensing) • Maximum-load-controlled high-performance piston pumps • Fuel-efficient required power regulation • Sensitive, proportional, independent steering • Primary and secondary protection against overload 	<ul style="list-style-type: none"> • Prefill valves for all work functions • Load-hold and fine-drop valve in lifting circuit • Pipe rupture valve for lifting cylinder • Standard gripper / gripper rotating function • 2 additional circuits for additional consumer loads possible 	<ul style="list-style-type: none"> • Operating modes: 3 pre-programmed modes (Fine, Eco, Power) • Max. discharge flow88 l/min • Max. operating pressure360 bar
--	--	--

PIVOTING ASSEMBLY

<ul style="list-style-type: none"> • Oscillating motor • Pivoting transmission • Pivoting brakes 	<ul style="list-style-type: none"> • Axial piston motor with priority valve • Planetary transmission • Automatic multidisc parking brake 	<ul style="list-style-type: none"> • Max. upper wagon RPM9/min • Oscillating torque34.7 kNm
---	---	---

TRACTION DRIVE AND BRAKES

<ul style="list-style-type: none"> • Control traction motor • Power-shift transmission • Dual-purpose brake valve • Driving direction pre-selection via switch in the pilot lever 	<ul style="list-style-type: none"> • Automotive driving and cruise control • Maximum speed20 km/h • Terrain speed5 km/h • Crawling speed1 km/h • Tractive force87.3 kN 	<ul style="list-style-type: none"> • Max. climbing power72.5% • Dual circuit brake systemDiscs • Parking brakeDiscs
---	---	--

LOWER WAGON

<ul style="list-style-type: none"> • 28 t special excavator axles • Steering axle with automatic swing axle blocking 	<ul style="list-style-type: none"> • 8 tyres10.00 - 20 	<ul style="list-style-type: none"> • 4 tyres (optional)600 - 22.5
--	---	--

FILL LEVELS

<ul style="list-style-type: none"> • Fuel tank 194 litres • Cooling system 35 litres 	<ul style="list-style-type: none"> • Engine oil 10 litres • Hydraulic tank volume 150 litres 	<ul style="list-style-type: none"> • Hydraulics system volume 290 litres
--	--	---

DRIVER CAB

<ul style="list-style-type: none"> • Extra-wide entrance • Left arm console can be folded up • Spacious leg room • Excellent all-around view • Preparation for radio installation 	<p>STEERING:</p> <ul style="list-style-type: none"> • Ergonomic pilot lever • Narrowness, height and tilt of the steering column can be adjusted • Clear and concise arrangement of the switches in the control panel 	<p>CLIMATE CONTROL:</p> <ul style="list-style-type: none"> • Air conditioner standard in all models • Very good air distribution through optimally arranged nozzles • ISO 6396 (LpA) in driving cab74 dB(A) • 2000/14EG (LwA) based on outside level99 dB(A)
<p>DRIVER'S SEAT:</p> <ul style="list-style-type: none"> • Comfort seat, air-suspended and heated (optional) • Arm rests and lumbar support • Can be adjusted separately from the console 	<p>MONITORING:</p> <ul style="list-style-type: none"> • Operating data appears in a display • Automatic monitoring, warning and saving 	

EQUIPMENT

OPERATING WEIGHTS

	Monoblock 4.20 m (C3.3M)		ADJUSTABLE BOOM Main arm 1.95 m (C3.41) Boom 3.07 m (C346)	
	Bending arm 1.96 m (D32)	Bending arm 2.50 m (D33)	Bending arm 1.96 m (D32)	Bending arm 2.50 m (D33)
Support dozer blad	13.8 t	13.9 t	14.2 t	14.4 t
APS / claws	14.9 t	15.0 t	15.3 t	15.4 t
4 support claws	15.1 t	15.2 t	15.6 t	15.7 t

Operating weight with driver, completely filled implement and 0,7 t for attachments

EQUIPMENT

BASIC DEVICE TEREX 1305 M (can be combined)	Bending arms	Cab:
• Mobile excavator 1305 M with dozer and support blade and 2 lifting cylinders (A 3.2)	• Bending arm 1.96 m (D 32)	• Air conditioner
• Mobile excavator 1305 M with quadruple claw support and 2 lifting cylinders (A 3.32)	• Bending arm 2.50 m (D 33)	• Radio preparation
• Mobile excavator 1305 M with APS on rigid axle, double claw support on steering axle and 2 lifting cylinders (A 3.33)	Scoop tipping cylinder:	• Height and tilt of the steering column can be adjusted
• Mobile excavator 1305 M with APS on steering axle, double claw support on rigid axle and 2 lifting cylinders (A 3.35)	• Scoop tipping cylinder with system of redirect levers (F 31)	• Seat can be moved separately from control panel
	Standard equipment	• Left arm console can be folded up
	Engine:	• Heat-insulating glass, tinted windows
	• Automatic idle	• Automotive driving and cruise control
	• Diesel pre-filter	• Operating data appears in a display
	• Engine monitoring	Equipment:
Boom:	Hydraulics:	• Ball and socket joint in the bend and scoop cylinder
• Monoblock boom with bending cylinder 4.22 m (C 3.3M)	• Gripper / gripper rotating function	• Consolidated lubrication points for rotating assembly and arm equipment
• Adjustable boom consisting of the main arm 1.95 m (C 3.41) with adjustable cylinder and boom 3.07 m (C 346) with bending cylinder	• Accumulator for emergency lowering of the arm system	Lower wagon:
	• Pipe rupture valve for lifting cylinder	• Power-shift transmission
	• Combination valve	• Disc brakes in the oil bath of the wheel hub
	• Max. load control	• Tool box in the lower wagon
	• Cylinder end-stop damping	

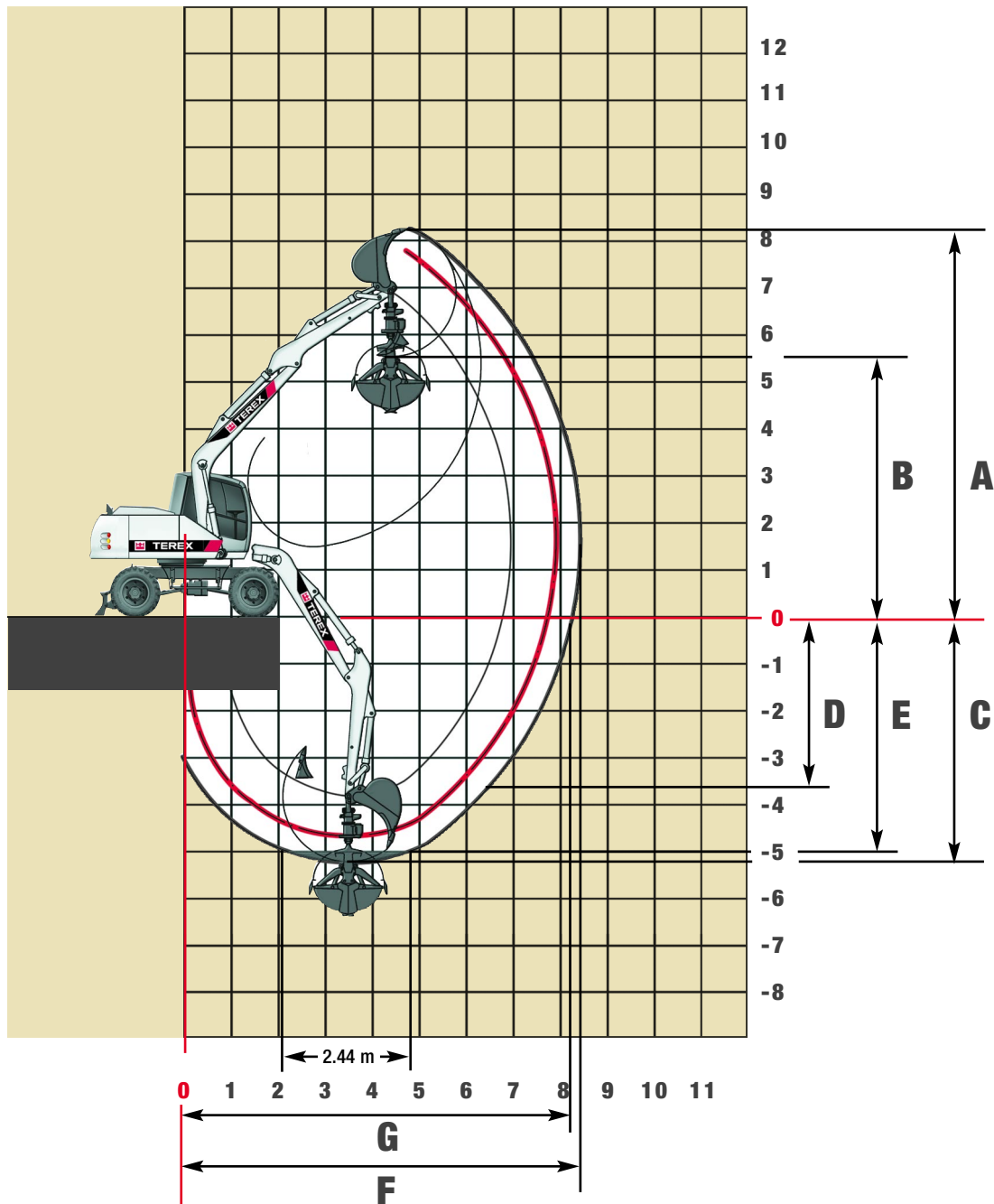
ADDITIONAL EQUIPMENT

Engine:	Equipment:	Lower wagon:
• Fuel pump	• Central lubrication system	• Broadened axles (overall width 2750 mm)
• RPM / potentiometer	Cab:	• Broadened dozer blade (overall width 2750 mm)
• Supplementary heating system	• Rock protection guard	• High-speed engine
• Cold startup assistance	• 360° lighting	Other special equipment: See price list
Hydraulics:	• Heated driver's seat	
• Hydr. adaptor kit, switch supports pairwise in front and back	• Heated side windows	
• Hydr. adaptor kit, switch supports individually	• Radio	
• Bio oil	• Cab heightening	

ATTACHMENTS

	Scoop F417	Scoop F415
Content SAE	0.92 m ³	0.67 m ³
Cutting width	1,100 mm	850 mm
Max. overhang of the dozer blade	6.0 m	7.0 m

Work Areas Monoblock 4.22 m (C3.3M)



BENDING ARM LENGTHS	1.96 m (D32)	2.5 m (D33)
A Max. cut-in height	7.90 metres	8.20 metres
B Max. pouring height	5.20 metres	5.50 metres
C Max. trench depth	4.60 metres	5.51 metres
D Max. vertical tapping depth	3.70 metres	3.70 metres
E Max. trench depth with 2.44-metre-wide base	4.40 metres	4.95 metres
F Max. reach	7.90 metres	8.40 metres
G Max. reach in the standing plane	7.70 metres	8.25 metres
Max. breakaway torque	106 kN	106 kN
Max. breakout force	64 kN	55 kN

Unit is equipped with monoblock attachment 4.22 m (C 3.3M).

Lifting Capacities Monoblock 4.22 m (C3.3M)

Lifting Capacities Monoblock 4.22 m (C 3.3M) with Bending Arm 1.96 m (D 32). Max. Reach 7.90 m

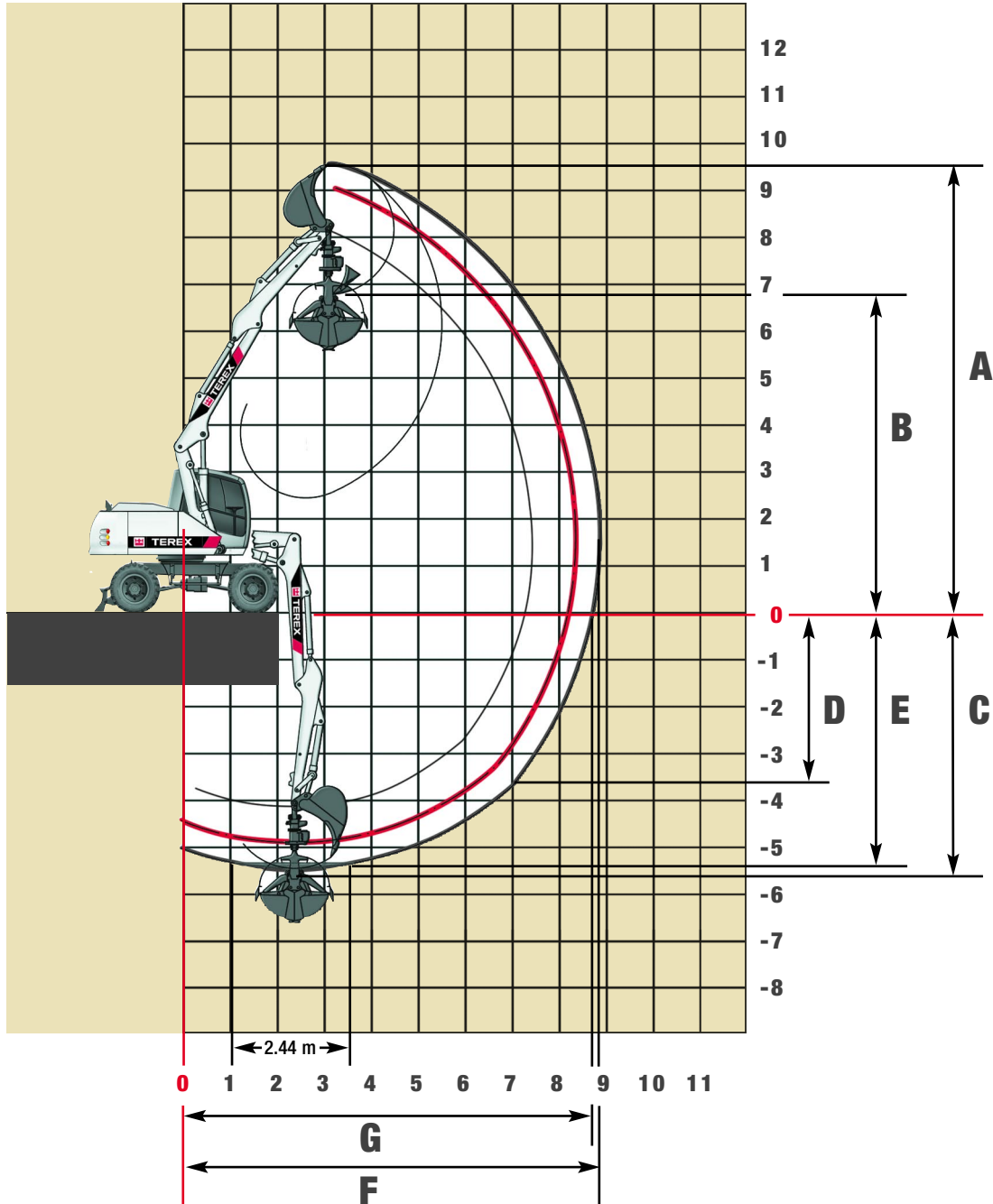
Height	Lower wagon type	3.0 m		4.5 m		6.0 m		7.5 m	
		FRONT	LATERAL	FRONT	LATERAL	FRONT	LATERAL	FRONT	LATERAL
+6.0 m	APS raised in the back			3502*	3493				
	APS lowered in the back			3502*	3502*				
	Claws hi / vo lowered			3502*	3502*				
	APS / claws lowered			3502*	3502*				
+4.5 m	APS raised in the back			3661*	3491				
	APS lowered in the back			3661*	3661*				
	Claws hi / vo lowered			3661*	3661*				
	APS / claws lowered			3661*	3661*				
+3.0 m	APS raised in the back			4201*	3356	3442*	2252		
	APS lowered in the back			4201*	3741	3442*	2497		
	Claws hi / vo lowered			4201*	4201*	3442*	3442*		
	APS / claws lowered			4201*	4201*	3442*	3442*		
+1.5 m	APS raised in the back			4794*	3196	3590*	2196		
	APS lowered in the back			4794*	3576	3590*	2440		
	Claws hi / vo lowered			4794*	4794*	3590*	3590*		
	APS / claws lowered			4794*	4794*	3590*	3522		
0 m	APS raised in the back	5883*	5407	4945*	3102	3526*	2163		
	APS lowered in the back	5883*	5883*	4945*	3480	3526*	2406		
	Claws hi / vo lowered	5883*	5883*	4945*	4945*	3526*	3526*		
	APS / claws lowered	5883*	5883*	4945*	4945*	3526*	3486		
-1.5 m	APS raised in the back	6420*	5460	4416*	3107				
	APS lowered in the back	6420*	6251	4416*	3484				
	Claws hi / vo lowered	6420*	6420*	4416*	4416*				
	APS / claws lowered	6420*	6420*	4416*	4416*				
-3.0 m	APS raised in the back	4089*	4089*						
	APS lowered in the back	4089*	4089*						
	Claws hi / vo lowered	4089*	4089*						
	APS / claws lowered	4089*	4089*						

Lifting Capacities Monoblock 4.22 m (C 3.3M) with Bending Arm 2.50 m (D 33). Max. Reach 8.40 m

Height	Lower wagon type	3.0 m		4.5 m		6.0 m		7.5 m	
		FRONT	LATERAL	FRONT	LATERAL	FRONT	LATERAL	FRONT	LATERAL
+6.0 m	APS raised in the back								
	APS lowered in the back								
	Claws hi / vo lowered								
	APS / claws lowered								
+4.5 m	APS raised in the back					3042*	2300		
	APS lowered in the back					3042*	2548		
	Claws hi / vo lowered					3042*	3042*		
	APS / claws lowered					3042*	3042*		
+3.0 m	APS raised in the back			3829*	3390	3203*	2257		
	APS lowered in the back			3829*	3777	3203*	2503		
	Claws hi / vo lowered			3829*	3829*	3203*	3203*		
	APS / claws lowered			3829*	3829*	3203*	3203*		
+1.5 m	APS raised in the back			4541*	3208	3450*	2184		
	APS lowered in the back			4541*	3590	3450*	2429		
	Claws hi / vo lowered			4541*	4541*	3450*	3450*		
	APS / claws lowered			4541*	4541*	3450*	3450*		
0 m	APS raised in the back	6434*	5360	4898*	3079	3544*	2127		
	APS lowered in the back	6434*	6148	4898*	3457	3544*	2371		
	Claws hi / vo lowered	6434*	6434*	4898*	4898*	3544*	3544*		
	APS / claws lowered	6434*	6434*	4898*	4898*	3544*	3451		
-1.5 m	APS raised in the back	7028*	5368	4646*	3050	3179*	2126		
	APS lowered in the back	7028*	6156	4646*	3427	3179*	2370		
	Claws hi / vo lowered	7028*	7028*	4646*	4646*	3179*	3179*		
	APS / claws lowered	7028*	7028*	4646*	4646*	3179*	3179*		
-3.0 m	APS raised in the back	5187*	5187*	3435*	3116				
	APS lowered in the back	5187*	5187*	3435*	3435*				
	Claws hi / vo lowered	5187*	5187*	3435*	3435*				
	APS / claws lowered	5187*	5187*	3435*	3435*				

The specified max. loading capacities in kilogrammes include a stability of 33% or are calculated at 87% of the hydraulic lifting power, as per ISO10567. These values are applicable at the tip of the arm with optimum positioning of the corresponding arm system and with the pressure switched on. * Value limited due to hydraulics.

Work Areas Adjustable Boom Main Arm 1.95 m (C3.41) and Boom 3.07 m (C346)



BENDING ARM LENGTHS	1.96 m (D32)	2.5 m (D33)
A Max. cut-in height	9.10 metres	9.50 metres
B Max. pouring height	6.35 metres	5.70 metres
C Max. trench depth	4.90 metres	5.40 metres
D Max. vertical tapping depth	3.65 metres	4.20 metres
E Max. trench depth with 2.44-metre-wide base	4.75 metres	5.30 metres
F Max. reach	8.40 metres	8.90 metres
G Max. reach in the standing plane	8.15 metres	8.70 metres
Max. breakaway torque	106 kN	106 kN
Max. breakout force	64 kN	55 kN

Unit is equipped with standard adjustable boom: main arm 1.95 m (C 3.41) and boom 3.07 m (C346).

Lifting Capacities Adjustable Boom Main Arm 1.95 m (C3.41) and Boom 3.07 m (C346)

Lifting Capacities Adjustable Boom: Main Arm 1.95 m (C3.41) and Boom 3.07 (346) with Bending Arm 1.96 m (D 32). Max. Reach 8.40 m

Height	Lower wagon type	3.0 m		4.5 m		6.0 m		7.5 m	
		FRONT	LATERAL	FRONT	LATERAL	FRONT	LATERAL	FRONT	LATERAL
+6.0 m	APS raised in the back			3561*	3506*				
	APS lowered in the back			3561*	3561*				
	Claws hi / vo lowered			3561*	3561*				
	APS / claws lowered			3561*	3561*				
+4.5 m	APS raised in the back	4973*	4973*	3729*	3461	3169*	2218		
	APS lowered in the back	4973*	4973*	3729*	3729*	3169*	2469		
	Claws hi / vo lowered	4973*	4973*	3729*	3729*	3169*	3169*		
	APS / claws lowered	4973*	4973*	3729*	3729*	3169*	3169*		
+3.0 m	APS raised in the back	5578*	5578*	4231*	3380	3277*	2222		
	APS lowered in the back	5578*	5578*	4231*	3710	3277*	2472		
	Claws hi / vo lowered	5578*	5578*	4231*	4231*	3277*	3277*		
	APS / claws lowered	5578*	5578*	4231*	4231*	3277*	3277*		
+1.5 m	APS raised in the back	6927*	5748	4636*	3359	3391*	2168		
	APS lowered in the back	6927*	6398	4636*	3677	3391*	2418		
	Claws hi / vo lowered	6927*	6927*	4636*	4636*	3391*	3391*		
	APS / claws lowered	6927*	6927*	4636*	4636*	3391*	3391*		
0 m	APS raised in the back	7583*	5752	4701*	3271	3450*	2080		
	APS lowered in the back	7583*	6508	4701*	3662	3450*	2328		
	Claws hi / vo lowered	7583*	7583*	4701*	4701*	3450*	3450*		
	APS / claws lowered	7583*	7583*	4701*	4701*	3450*	3417		
-1.5 m	APS raised in the back	7830*	5575	4895*	3096	2771*	2029		
	APS lowered in the back	7830*	6387	4895*	3482	2771*	2276		
	Claws hi / vo lowered	7830*	7830*	4895*	4895*	2771*	2771*		
	APS / claws lowered	7830*	7830*	4895*	4895*	2771*	2771*		
-3.0 m	APS raised in the back	6617*	5517	3025*	3025*				
	APS lowered in the back	6617*	6327	3025*	3025*				
	Claws hi / vo lowered	6617*	6617*	3025*	3025*				
	APS / claws lowered	6617*	6617*	3025*	3025*				

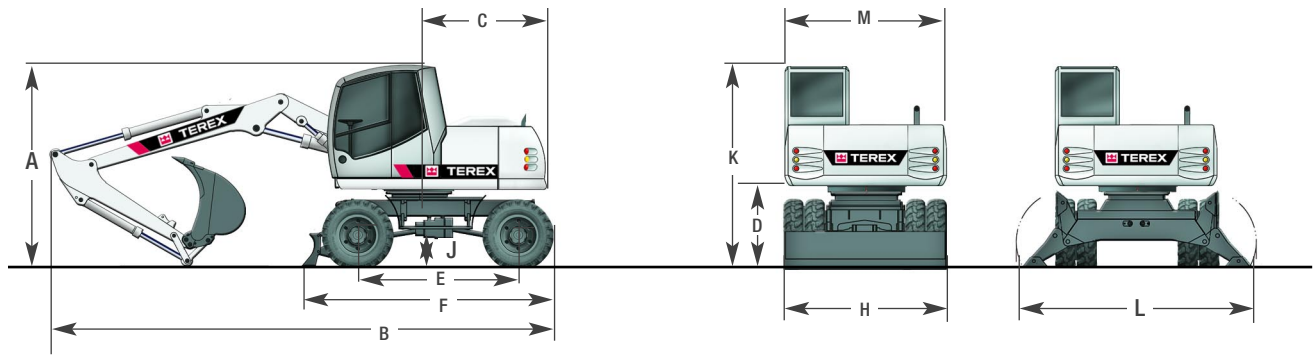
Lifting Capacities Adjustable Boom: Main Arm 1.95 m (C3.41) and Boom 3.07 (346) with Bending Arm 2.5 m (D 33). Max. Reach 8.90 m

Height	Lower wagon type	3.0 m		4.5 m		6.0 m		7.5 m	
		FRONT	LATERAL	FRONT	LATERAL	FRONT	LATERAL	FRONT	LATERAL
+6.0 m	APS raised in the back			3175*	3175*				
	APS lowered in the back			3175*	3175*				
	Claws hi / vo lowered			3175*	3175*				
	APS / claws lowered			3175*	3175*				
+4.5 m	APS raised in the back			3396*	3396*	2930*	2292		
	APS lowered in the back			3396*	3396*	2930*	2542		
	Claws hi / vo lowered			3396*	3396*	2930*	2930*		
	APS / claws lowered			3396*	3396*	2930*	2930*		
+3.0 m	APS raised in the back	5452*	5452*	3941*	3373	3105*	2287		
	APS lowered in the back	5452*	5452*	3941*	3701	3105*	2531		
	Claws hi / vo lowered	5452*	5452*	3941*	3941*	3105*	3105*		
	APS / claws lowered	5452*	5452*	3941*	3941*	3105*	3105*		
+1.5 m	APS raised in the back	6744*	5704*	4471*	3312*	3294*	2226		
	APS lowered in the back	6744*	6348*	4471*	3629	3294*	2473		
	Claws hi / vo lowered	6744*	6744*	4471*	4471*	3294*	3294*		
	APS / claws lowered	6744*	6744*	4471*	4471*	3294*	3294*		
0 m	APS raised in the back	7435*	5749	4617*	3297	3348*	2124		
	APS lowered in the back	7435*	6397*	4617*	3673	3348*	2370		
	Claws hi / vo lowered	7435*	7435*	4617*	4617*	3348*	3348*		
	APS / claws lowered	7435*	7435*	4617*	4617*	3348*	3348*		
-1.5 m	APS raised in the back	7628*	5564	4742*	3160	3287*	2025		
	APS lowered in the back	7628*	6378	4742*	3549	3287*	2273		
	Claws hi / vo lowered	7628*	7628*	4742*	4742*	3287*	3287*		
	APS / claws lowered	7628*	7628*	4742*	4742*	3287*	3287*		
-3.0 m	APS raised in the back	7710*	5524	4201*	3006				
	APS lowered in the back	7710*	6336	4201*	3391				
	Claws hi / vo lowered	7710*	7710*	4201*	4201*				
	APS / claws lowered	7710*	7710*	4201*	4201*				

The specified max. loading capacities in kilogrammes include a stability of 33% or are calculated at 87% of the hydraulic lifting power, as per ISO10567. These values are applicable at the tip of the arm with optimum positioning of the corresponding arm system and with the pressure switched on. * Value limited due to hydraulics.

Dimensions with Chassis Mount Combinations

DIMENSIONS



A TRANSPORT HEIGHT (with scoop)		C REAR PIVOTING RADIUS 1.98 m	
Adjustable boom* with bending arm 1.96 m	3.08 m	D CLEARANCE HEIGHT TO UPPER WAGON	1.22 m
Adjustable boom* with bending arm 2.50 m	3.08 m	R WHEEL BASE	2.50 m
Monoblock 4.22 m with bending arm 1.96 m	3.08 m	F LOWER WAGON LENGTH	3.98 m
Monoblock 4.22 m with bending arm 2.50 m	3.08 m	H DOZER BLADE WIDTH.....	2.49 m
B TRANSPORT LENGTH		J GROUND CLEARANCE	0.45 m
Adjustable boom* with bending arm 1.96 m	7.72 m	K HEIGHT ABOVE CAB.....	3.08 m
Adjustable boom* with bending arm 2.50 m	7.68 m	L CLAW WIDTH (extended)	3.50 m
Monoblock 4.22 m with bending arm 1.96 m	7.30 m	M UPPER WAGON TRANSPORT WIDTH	2.50 m
Monoblock 4.22 m with bending arm 2.50 m	7.25 m		

* Adjustable boom: main arm 1.95 m (C341) and boom 3.07 m (C346)

